



Tractors

NEXOS

250 240 230 220 210

**CLAAS**



# Small in size, great in performance. The new NEXOS.

More powerful, more efficient, more manoeuvrable. In orchards, vineyards or municipal applications, the new NEXOS adapts perfectly to suit your needs and working methods.

To accommodate a wide range of requirements and implements, we offer an extensive choice of tractor types and a variety of equipment options. Your NEXOS meets every challenge with ease.

Discover the new NEXOS series from CLAAS:

- Three versions – F, VL and VE – with a minimum overall width of just 1 m
- Five models with outputs up to 112 hp
- A powerful hydraulic circuit with a maximum hydraulic output of 87 l/min





CLAAS has many years of experience in the design, manufacture and distribution of harvesting machinery in over 140 countries around the globe; it also offers a comprehensive range of tractors in 50 different models from 75 to 530 hp. Therefore, when developing the NEXOS series CLAAS was able to call on its huge wealth of expertise from the outset. The company's advanced product engineering and production processes and superior durability testing procedures underpin the high standards of quality and reliability of CLAAS products.

<b>Innovations</b>	<b>6</b>
<b>CLAAS POWER SYSTEMS (CPS)</b>	<b>8</b>
Model range and dimensions	10
Engine	12
Transmission and PTO	14
Design and construction	16
Front and rear linkage	18
Hydraulics	20
<b>Comfort</b>	<b>22</b>
Cab	24
Comfort and safety	26
Right-hand control panel	28
<b>Service</b>	<b>32</b>
Maintenance	34
CLAAS Service & Parts	36
<b>Features</b>	<b>38</b>
<b>Specifications</b>	<b>39</b>

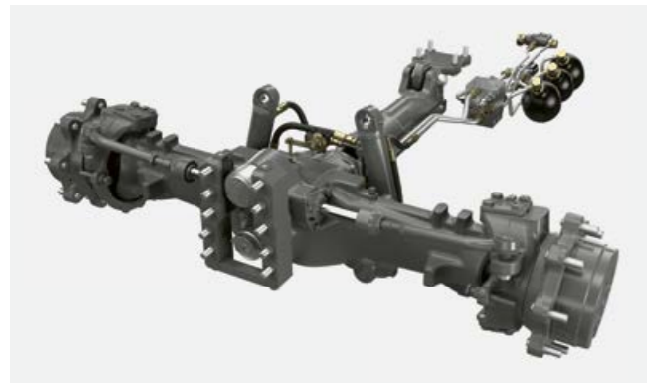
Learn more about how we develop and manufacture CLAAS tractors:

[tractors-making-of.claas.com](http://tractors-making-of.claas.com)

# A solid basis.

## Just right for you.

In orchards, vineyards or for municipal applications, the new NEXOS adapts perfectly to suit your needs and working methods. To accommodate a wide range of requirements and implements, we offer an extensive choice of tractor types and a variety of equipment options.



### NEW: PROACTIV front axle suspension.

The CLAAS suspension kinematics in NEXOS F, VL and VE tractors produce outstanding drive characteristics. Widely spaced suspension rams guarantee vehicle stability and safety on bends, while the double-acting suspension with load change compensation and 80 mm suspension travel delivers outstanding ride comfort.

### NEW: Category 4 cab filter system.

The Category 4 filter system integrated into the cab roof ensures maximum driver safety during crop spraying. Three large filters extend the maintenance interval and supply clean air to the cab. A slight positive pressure in the ventilation fan prevents chemicals from entering the cab.

### Sophisticated electronics.

Electronic control systems are available for both cab and platform versions of the NEXOS and can be selected independently. As a result, the tractor adapts to your needs – not the other way round.

### One spool valve for up to three consumers.

Choice of mechanical and electronic spool valves: One spool valve can be fitted with up to two electronically activated, hydraulic splitters. At the touch of a button, the driver can effortlessly direct the oil flow to the four connections in front of the cab.

Our drive system: the perfect interplay between optimal components.

A CLAAS machine is much more than the sum of its individual parts. Top performance is only possible when all the parts are ideally matched and work together optimally.

In CLAAS POWER SYSTEMS (CPS), we have brought together top-quality components to create an intelligent drive system that sets new standards. Full engine output only when it is required. Drives that are suited to the way the machines are used. Fuel-saving technology which quickly pays off.



**CPS** | CLAAS  
POWER  
SYSTEMS

Variety in every width.  
More NEXOS.



Productivity when you need it.

With three versions – F, VL and VE – plus a wide selection of tyres and alternative platform or cab configurations, the NEXOS is completely at home in any row, orchard or plantation. In total, the NEXOS series offers 14 different models, developing 75 to 112 hp.

Tailor-made to meet your needs:

- Basic version with fully mechanical transmission and mechanical rear linkage control system
- Electronic REVERSHIFT clutchless reverser
- TWINSHIFT powershift unit
- Mechanical or electronic rear linkage operation
- Hydraulic output of up to 87 l/min
- Up to four electronic spool valves
- Cab with air conditioning and new active carbon filter
- Front linkage and front PTO





## Strong at heart.

Under the bonnet, all models have FPT engines with 3.4 l cubic capacity and state-of-the-art fuel-saving technology:

- Viscous fan
- 1,600 bar high-pressure common rail injection
- Turbocharger
- Intercooler
- Complies with emissions standard Stage IIIB (Tier 4i) thanks to a diesel particulate filter, DOC catalytic converter and external, cooled exhaust gas recirculation (EGR)

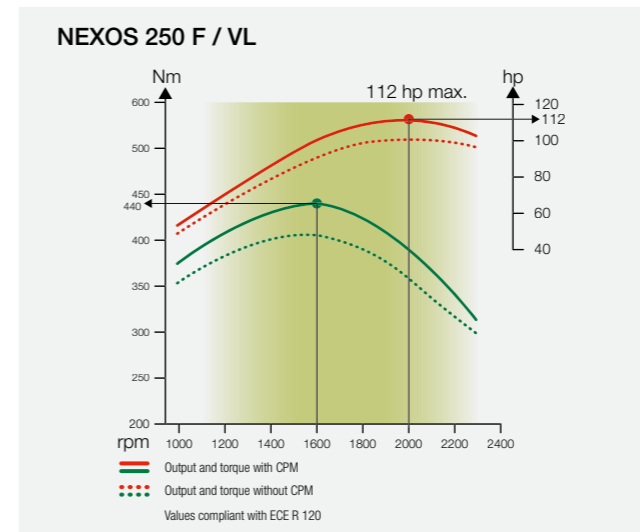
The cubic capacity is now 3.4 l which guarantees low fuel consumption. When combined with a well-balanced 4-cylinder engine, this ensures that the tractor runs very smoothly with low noise levels and a long service life. Despite its compact format, the NEXOS with viscous fan and the latest injection and emission control technology is well equipped for efficient operation. The NEXOS comes with an engine air pre-warmer as standard.

	Maximum output (hp)	Maximum torque (Nm)
NEXOS	ECE R 120	ECE R 120
250 F, VL	112 <sup>1</sup>	440 <sup>1</sup>
240 F, VL, VE	103	406
230 F, VL, VE	92	366
220 F, VL, VE	85	334
210 F, VL, VE	75	309

<sup>1</sup> Maximum values with CPM (9 hp boost)



Thanks to electronic common rail injection, an engine speed memory comes as standard. A second memory is available as an option.

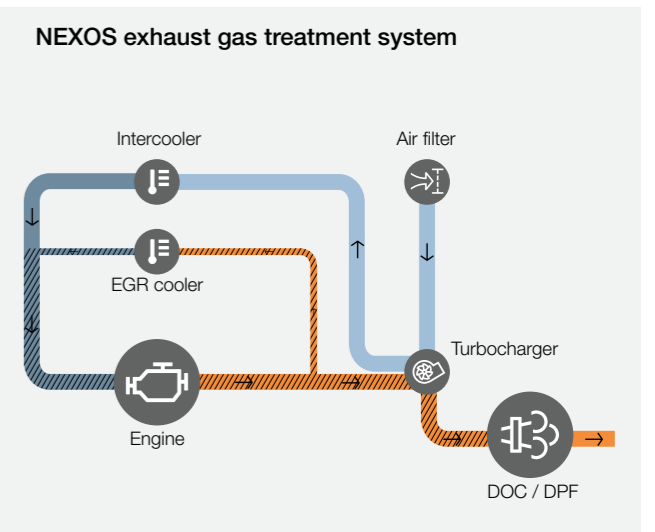


## Constant output.

The CLAAS-specific engine performance curve provides full torque in a wide engine speed range, guaranteeing constant output and power delivery when they are needed. This makes it easy to save fuel while working at a low engine speed and maximum torque with the ECO PTO, or to work at rated speed with a full reserve. The high efficiency level eliminates the need for frequent gear changes.

## The NEXOS 250. Do more.

Thanks to CPM (CLAAS POWER MANAGEMENT) the NEXOS 250 delivers a boost of up to 9 hp during PTO work and transport work from 13 km/h. It is therefore ideal for hauling bigger trailers and for use in power-hungry PTO work. Despite its very compact format, the NEXOS offers a maximum output of 112 hp and maximum torque of 440 Nm, making it suitable for a wide range of applications.



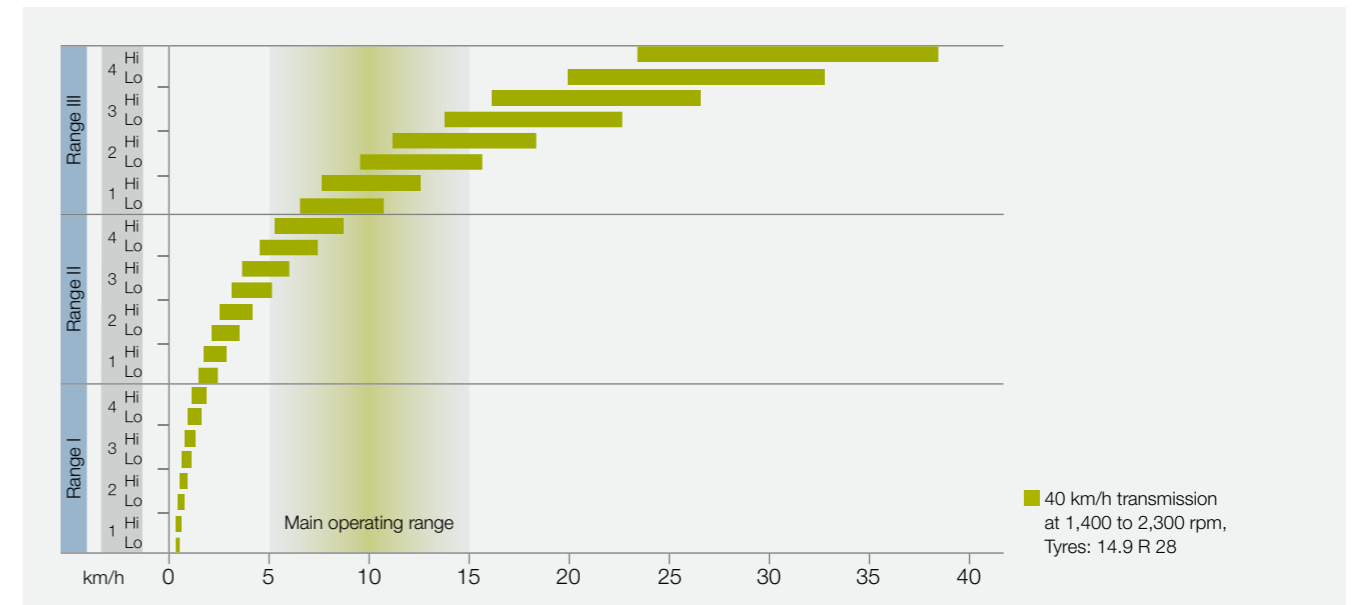
## Outstanding pollutant reduction.

The introduction of the Stage IIIB (Tier 4i) emission regulations is the most important step to date in the control of pollutant emissions in the narrow-width tractor class. These regulations require a 90% reduction in particulate matter (PM) as well as a 50% cut in nitrogen oxide (NOx) content.

## Clean and efficient.

In EGR (Exhaust Gas Recirculation) technology, a proportion of the engine exhaust gas is mixed with fresh air drawn in separately, reducing the speed of engine combustion and the temperatures generated. This technology largely eliminates the accumulation of nitrogen oxides. However, soot thresholds can only be met with the aid of a particulate filter (DPF). EGR technology does not require a second tank or additional resources.

When developing the NEXOS tractors, CLAAS factored in all the components that would be necessary to meet the Stage IIIB (Tier 4i) exhaust emissions level. As a result, access to the tractor and visibility from the cab are not compromised in any way. The combined DPF / DOC catalytic converter is safely housed under the bonnet.

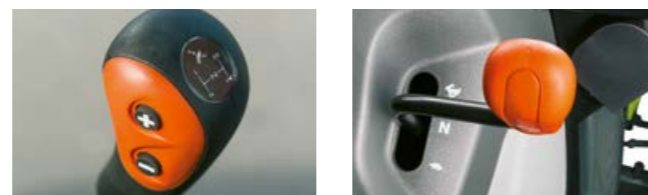


## Five transmission options.

With five transmissions, the NEXOS always offers the perfect solution:

- 24 F / 12 R with REVERSHIFT clutchless reverser and TWINSHIFT (two-speed powershift unit)
- 24 F / 24 R with REVERSHIFT clutchless reverser and mechanical splitter (only with NEXOS F and VL)
- 24 F / 24 R transmission with mechanical reverser and TWINSHIFT (two-speed powershift unit)

- 24 F / 24 R with mechanical reverser and mechanical splitter
- 12 F / 12 R with mechanical reverser and 30 km/h top speed for models with four- or two-wheel drive (four gears, three ranges)



The 24-gear transmission can optionally be fitted with a mechanical splitter on the right next to the steering wheel or the easy-to-use TWINSHIFT two-stage powershift which is operated from the gear-shift lever.

The 24 gears deliver the ideal speed for every situation. And with a minimum ground speed of 500 m/h at rated engine speed, you are perfectly equipped to tackle specialist applications.

The REVERSHIFT clutchless reverser on the steering wheel makes manoeuvring quick and simple. Turn without stopping – whether you are on the headland or stacking crates! The TWINSHIFT powershift is easily activated by pressing a button on the gear knob.

With a 24 F / 12 R transmission the clutch pedal is almost redundant. Especially during transport work, one press of the clutch button on the shift lever is all it takes to disengage the transmission and shift to the next mechanical gear.

## Powerful drive. The PTOs.

The NEXOS comes with a range of PTO options. These include a ground speed PTO and a 540 ECO PTO operating at 1,650 rpm (engine speed) for low diesel consumption and minimum noise levels during light PTO work.

- 540 rpm
- 540 ECO and 540 rpm
- 540 and 1,000 rpm

PTO engagement is hydraulically supported as standard. When combined with the 24 F / 12 R transmission, the PTO is engaged electronically.



The reverser for mechanical reversing and the electronic REVERSHIFT are handily positioned to the left of the steering wheel.



With REVERSHIFT and TWINSHIFT: the electronic clutch is operated by pressing a button on the gear lever.



Pull more.  
Tighter turns.



**Automatic 4-wheel drive.**

Four-wheel drive is activated by pressing a button. To eliminate unnecessary tyre wear, the automatic four-wheel drive system automatically switches it on or off at 14 km/h. It is also automatically engaged when braking to ensure a higher standard of safety on the road. This means that your NEXOS can be safely brought to a standstill at any time.

**CLAAS tractor concept.**

The NEXOS with its typical CLAAS design is impressively agile. By combining a long wheelbase with optimum weight distribution (50% front, 50% rear) and a compact overall length, the NEXOS can lift and pull heavy weights – and performs brilliantly in every situation. Greatness comes in many guises.

**Long wheelbase and excellent weight distribution:**

- High driving comfort
- Good and safe road handling
- More pulling power and performance as less ballast is required
- Greater stability for a higher lifting capacity
- Optimised fuel consumption
- Lower ballast requirement protects the soil and guarantees dynamic road transport

**Compact design.**

Thanks to the distinctive new bonnet, visibility in the NEXOS has never been better. At the same time there is plenty of space for all the exhaust aftertreatment components and the cooling system, which is specially designed to give higher performance.

**Short overall length:**

- Highly manoeuvrable
- Short trailer combination on the road
- Good visibility
- Good guidance of front-mounted implements



**Designed for tight spaces.**

The specially shaped front chassis provides plenty of space for the radiators immediately above the front axle, but in front and behind it is designed to be very narrow – like a wasp waist. The steering angle-dependent automatic four-wheel drive system also disengages four-wheel drive on reaching a steering angle of 14°. Together with the compact design, this promises an excellent steering lock angle and very tight turning circles.



## High lifting capacity.

With a maximum lifting capacity of 3.1 t (VE max. 2.5 t) at the ball ends on the rear linkage, the NEXOS can cope with just about any implement. A hydraulic lift rod and hydraulic side stabilisers are available for the VL and F models, providing high-precision implement guidance, particularly over sloping terrain. The rear linkage is available with the mechanical or electronic TCE 6 operating unit. The external controls on the mudguards make implement attachment simple and safe.

## More combinations.

With a lifting capacity of 2.8 t, the front linkage can handle any implement. As well as the conventional 1,000 rpm front PTO, a 540 ECO front PTO – capable of supplying the full PTO speed at just 1,650 engine rpm – is also available.



This saves time and also reduces fuel consumption during light work.

A spool valve and a free-flow return line can be connected directly on the front linkage. An electrical connection at the front makes it possible to install a variety of consumers.

## More attachment options.

The NEXOS can also be fitted with a front mounting plate instead of a front linkage. This is particularly recommended when the front-mounted implement is only installed and removed occasionally. With very heavy implements, the plate reduces the front overhang compared with the front linkage.

An adapted strut along the engine reliably supports all attachments. Additionally, threaded holes are provided in this strut between the front axle and cab to create extra side mounting space. Small in size, great in performance.



Convenient external controls with mechanical or electronic rear linkage.



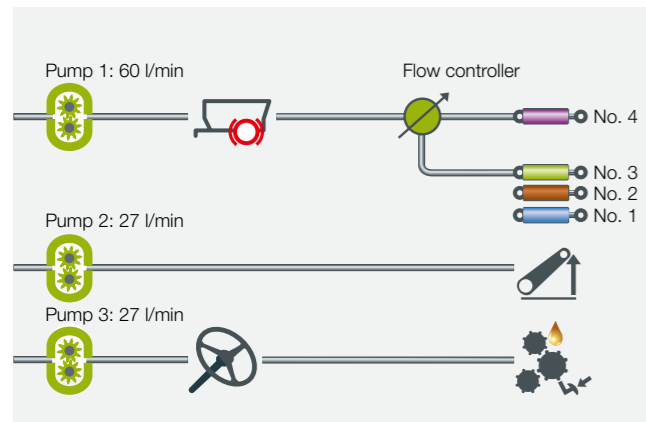
Choose between a mechanical and an electronic rear linkage control system. Both are ergonomically positioned to the right of the driver's seat.



The folding front linkage reduces the overhang, allowing safe turning manoeuvres at the headland.



# Immense hydraulic power in a small space.



3-pump hydraulic circuit with a total flow rate of 114 l/min: 87 l/min for the spool valves and rear linkage and 27 l/min for the steering and transmission.

## Hydraulic output on demand.

With its enormous hydraulic output, the NEXOS has been specially engineered for high-intensity operations with attached implements or multiple equipment combinations. It has two hydraulic pumps as standard. The full 60 l/min from one pump is dedicated to the spool valves and rear linkage. The second pump supplies the steering. For applications with particularly high hydraulic requirements, the NEXOS can be fitted with a 3-pump hydraulic circuit which achieves a delivery rate of 87 l/min. The third pump delivers 27 l/min and is dedicated to the rear linkage. With the steering, spool valves and rear linkage supplied independently, it's easy to perform several overlapping functions simultaneously.



The hydraulic trailer brake enables you to remain flexible during transport operations.\*



## One spool valve for up to three consumers.

In both versions, a spool valve with up to two electronically activated, hydraulic splitters is available as an option. At the touch of a button, the driver can effortlessly direct the oil flow to the four connections in front of the cab. One spool valve for up to three consumers.

## Mechanical or electronic spool valves.

The NEXOS can be equipped with up to four mechanical spool valves. For maximum convenience, it can also be fitted with four electronic spool valves which are easy to operate using the ELECTROPILOT joystick and two rocker switches.

Compact on the outside.  
Comfortable inside.

The NEXOS cab is surprisingly spacious in every respect, with an enormous volume for a narrow-width tractor. More room for more comfort.

- Optimum all-round view thanks to 6-pillar cab with very slim pillars
- Excellent access to the cab via the steps
- A quiet, comfortable workplace
- Electronic comfort features available
- Platform version available for NEXOS F models





Room for more comfort.

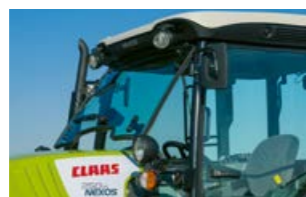
In developing the NEXOS, CLAAS engineers placed huge emphasis on creating a spacious environment for the driver. The cab is very spacious for a tractor of this size and offers generous leg room and a comfortable working environment, even for tall drivers.

The NEXOS boasts an outstanding all-round view, thanks to large glass windows. The large glazed area at the rear of the cab in particular offers an unrestricted view of the attachment and working area.

The ergonomic arrangement of the controls and the clear logic of their allocated functions enables the NEXOS to be operated comfortably and effortlessly throughout long working days. The instrument panel provides clear and concise information about the operating status of the NEXOS, including vehicle speed, engine speed and rear PTO speed, so you know what's happening all the time.



The steering column tilts and has telescopic height adjustment so it can be adapted to the driver's seating position.



An opening windscreen can be selected for natural ventilation.



A cable feedthrough from the cab to the front and rear and a mounting rail on the right-hand door make it easy to install external implement control units.



Big on detail.

Quality and versatility are present in every detail. Large, wide-opening doors and a non-slip step make access to the vehicle safe and convenient. The front and rear windows can be opened for natural ventilation, and the powerful air-conditioning unit creates a cool working environment in hot and dusty conditions.

NEXOS F with platform.



The NEXOS F – the platform version with a folding roll bar – is the ideal partner in orchards, plantations and greenhouses with low head height. Thanks to gas-filled struts and a pin locking system, the roll bar can be folded down effortlessly. Like all models, the platform version of the NEXOS F can be fitted with different transmission options, mechanical operation or sophisticated electronics to suit your needs.

An air-sprung driver's seat is optionally available for both cab and platform versions. The steering column can also be adjusted to allow the driver to sit comfortably.



Folding side-marker lights on the NEXOS prevent damage to crops.

# Comfortable drive and clean air.



## NEW: automatic, manual or deactivated front axle suspension.

Simply toggle between the three modes on the B-pillar for flexible use of the suspension:

### Automatic mode:

No matter how much load is on the front axle, the suspension rams remain in the central position to ensure optimum suspension travel. Automatic mode is automatically activated at over 25 km/h for added safety.

### Manual mode:

By turning a potentiometer the driver can adjust the suspension height when the machine is stationary to make it easier to attach an implement to the front mounting plate, for example.

### Deactivated mode:

At the press of a button the suspension can be deactivated for special tasks, e.g. with very frequent load changes.

## NEW: PROACTIV front axle suspension.

The CLAAS suspension kinematics in NEXOS F, VL and VE tractors produce outstanding drive characteristics. Widely spaced suspension rams guarantee vehicle stability and safety on bends, while the double-acting suspension with load change compensation and 80 mm suspension travel delivers outstanding ride comfort.

## Cab with Category 3 filter system.

An active carbon filter can be fitted at the factory in place of a standard filter to protect the operator during crop spraying operations. Together with a well-sealed cab and powerful ventilation system, the filter ensures that the driver is well protected even during intensive crop spraying work.



## NEW: Category 4 cab filter system.

The Category 4 filter system integrated into the cab roof ensures maximum driver safety during crop spraying. The elevated position of the air intake system ensures that the supply air is as clean as possible. Three large filters extend the maintenance interval and supply clean air to the cab. A slight positive pressure in the ventilation fan prevents chemicals from entering the cab.



## 3-filter system:

- Dust filter supplies dedusted air to the other filters
- Aerosol filter protects against solid and liquid suspended particles
- Active carbon filter protects against gaseous fumes
- A positive pressure gauge with status display in the cab guarantees clean air
- Easy to use and quick to refit in other machines
- Maximum cab protection class in compliance with EN 15695



Easy to toggle between front axle suspension modes on the B-pillar



Status display for cab filter system and fan activation/control within easy reach on the B-pillar.

## A place for everything.

The NEXOS control concept is designed so that any driver can operate the tractor efficiently and completely intuitively. The arrangement of the controls and the symbols on them are integral to this – whether you choose a mechanical or an electronic control system. Electronic control systems are available for both cab and platform versions of the NEXOS and can be selected independently. As a result, the tractor adapts to your needs – not the other way round.

## Ergonomic side console.

The key to relaxed and effective working. The side console is the result of extensive analyses of the operating processes in the cab. Frequently used functions are located at the front of the right-hand side console, while those that are used less frequently are positioned towards the back.

- 1 Control panel for rear linkage
- 2 Activate the electronic front and rear PTO
- 3 Electronic hand throttle
- 4 Control panel for electronic spool valves
- 5 Set and activate up to two engine speed memories
- 6 Time and volume settings for the electronic spool valves
- 7 Main switch, spool valves
- 8 Electronic four-wheel drive and differential lock engagement
- 9 Electronic linkage control adjustment
- 10 Hydraulic side stabiliser operation
- 11 25 A socket



## Clear, logical layout.

The control panel for the electronic linkage control system is handily positioned to the driver's right. The settings can be adjusted on the right-hand B-pillar. This guarantees direct access while work is in progress, and allows the driver to optimise the electronic linkage control setting when looking backwards.

Electronic linkage control settings:

- A Position and draught control
- B Lowering speed
- C Lifting height limiter



The front PTO is always engaged electronically. For the rear PTO, this function is available as an option.



Time and volume control for the four electronic spool valves can be regulated at any time using the dials.

# Mechanical control system.

## All-round simplicity.

If you don't need a top-end model, the NEXOS with a mechanical control system is a sound alternative. The individual controls are ergonomically arranged and completely self-explanatory. Even in this version, the standard equipment includes electronic engine speed regulation with engine speed memory as well as four-wheel drive and differential lock engagement. The rear PTO is engaged with hydraulic support without excessive use of power.

## Ergonomic side console.

The arrangement of the controls is similar in both the electronic and the mechanical versions. Frequently used functions are located at the front of the right-hand side console, while those that are used less frequently are positioned towards the back.

- 1 Rear linkage operation
- 2 Mechanical spool valve operation
- 3 Set and activate up to two engine speed memories
- 4 Electronic hand throttle
- 5 Activate electronic front PTO (optional)
- 6 Electronic four-wheel drive and differential lock engagement
- 7 25 A socket
- 8 Hydraulic side stabiliser operation
- 9 Hydraulically supported rear PTO activation
- 10 Pre-select PTO speed and ground PTO



Even with the mechanical rear linkage, the lowering speed and draught control sensitivity can be finely adjusted under the driver's seat.



PTO work is very simple with the NEXOS as the engine-speed memory is part of the standard specification.



The PTO is engaged with hydraulic support as standard. Electronic PTO engagement is available as an option in machines with REVERSHIFT clutchless reverser and TWINSHIFT.



# Simple. Safe. Reliable. CLAAS Service and maintenance.

Maintenance, spare parts, service: the CLAAS team does everything it can to reduce downtime with your NEXOS to an absolute minimum. We have developed clever solutions for effective maintenance – because a well-prepared machine provides maximum operational reliability. Ensuring that your machine functions correctly and retains its value are our top priorities. Because we know that your tractor is one of the keys to success.





Ready in an instant.

Daily maintenance work should be as straightforward as possible – because we know from experience that nobody enjoys doing things that are complicated or inconvenient.

- The one-piece bonnet opens at the press of a button, providing access to all the engine maintenance points
- The oil can be checked and topped up on the right-hand side of the NEXOS when the bonnet is closed
- All daily maintenance tasks can be carried out without tools

Long oil-change intervals (engine 600 h, transmission and hydraulics 1,200 h) save a great deal of time and money. This means that less valuable working time is lost during the season and the tractor is where it should be – at work.



The battery isolating switch is easy to reach at the back of the cab.



Thanks to the one-piece bonnet, the entire engine compartment can be opened up at the flick of a catch. The air filter is directly accessible. The radiator slides out, and the air filter can be removed in no time at all. The special air nozzle supplied makes cleaning the tightly packed cooling units child's play, allowing radiator surfaces to be checked and cleaned quickly whenever necessary.

The cab air filter is easily accessible from the exterior for cleaning and ensures that the air in the cab is fresh at all times. To protect the driver when crop spraying, an active carbon filter can be installed instead of the conventional cab filter.



Although space is tight, every NEXOS has room for a toolbox.



The practical lift-up cap on the bonnet makes it easy to open and fill the safely protected tank below.

# Whatever it takes. CLAAS Service & Parts.



## Your requirements count.

You can always rely on us: we'll be there whenever you need us. Everywhere. Fast. Reliable. 24 hours a day if necessary. With a complete solution for your machine or business. Whatever it takes.

## ORIGINAL parts and accessories.

Specially matched to your machine: precision-manufactured spare parts, high-quality consumables and useful accessories. We will supply exactly the right solution from our comprehensive product range to ensure that your machine is 100% reliable. Whatever it takes.

## For your business: CLAAS FARM PARTS.

CLAAS FARM PARTS offers one of the most comprehensive spare parts programmes, regardless of brand and sector, for all agricultural applications on your farm. Whatever it takes.

## Always up to date.

CLAAS dealers are among the most efficient agricultural technology businesses in the world. Our service teams are ideally qualified and equipped with the all-important special tools and diagnostic systems. CLAAS Service stands for high-quality work which meets all your expectations with regard to expertise and reliability. Whatever it takes.

## Planned reliability.

Our service products help you to increase machine reliability, minimise the breakdown risk and base your calculations on predictable costs. CLAAS MAXI CARE offers planned reliability for your machine. Whatever it takes.

## Worldwide coverage from Hamm.

Our central spare parts warehouse delivers all ORIGINAL parts quickly and reliably all over the world. Your local CLAAS partner can supply the right solution for your harvest or your business within a very short time. Whatever it takes.

The CLAAS Parts Logistics Center in Hamm, Germany, stocks more than 155,000 different parts and has a warehouse area of over 100,000 m<sup>2</sup>.



Packed with impressive features.



#### CLAAS POWER SYSTEMS.

- Five 4-cylinder models, max. engine output from 75 to 112 hp
- Min. overall width: NEXOS VE 1.00 m, NEXOS VL 1.26 m, NEXOS F 1.45 m
- Choice of five transmission options
- REVERSHIFT clutchless reverser for greater convenience
- Max. rear linkage lifting capacity of 3.1 t (VE max. 2.5 t)
- PTO speeds: 540, 540 / 540 ECO or 540 / 1,000 rpm
- Four electronic spool valves, operated by ELECTROPILOT 4-way control lever and two rocker switches
- 60 l or 87 l hydraulic circuit for rear linkage and spool valves
- Front linkage with integrated front PTO

#### Comfort and convenience.

- Comfortable cab with air-conditioning system or natural ventilation provided by opening front and rear windows
- Large windows offer a superb all-round view
- Category 3 active carbon filter or Category 4 cab filter system for optimal protection of driver during field work
- Air-suspended comfort seat available as an option
- PROACTIV front axle suspension
- Comprehensive electronic control systems available for convenient, straightforward operation
- External rear linkage controls for enhanced safety when attaching and removing implements
- Simple maintenance thanks to easily accessible maintenance points
- Long oil-change intervals: 600 h (engine) and 1,200 h (transmission)
- CLAAS Service

NEXOS		250 F-VL	240 F-VL-VE	230 F-VL-VE	220 F-VL-VE	210 F-VL-VE
<b>Engine</b>						
Manufacturer		FPT	FPT	FPT	FPT	FPT
Emissions standard		Stage III B with diesel oxidation catalytic converter and diesel particulate filter				
Number of cylinders		4	4	4	4	4
Cubic capacity	cm <sup>3</sup>	3400	3400	3400	3400	3400
Turbocharger		●	●	●	●	●
Intercooler		●	●	●	●	●
Nominal engine speed	rpm	2300	2300	2300	2300	2300
Injection system		Common rail				
Max. output (ECE R 120) <sup>1</sup>	KW/hp	82/112 <sup>2</sup>	76/103	68/92	62/85	55/75
Type-approved output (97/68 EC) <sup>2</sup>	KW	76	72	67	61	55
Engine speed at max. torque	rpm	1600	1600	1500	1500	1500
Max. torque	Nm	440	406	366	334	309
Viscous fan		●	●	●	●	●
Fuel tank capacity (standard)	l	75	75	75	75	75
Auxiliary fuel tank capacity available for NEXOS F and VL (option) <sup>3</sup>	l	28	28	28	28	28
Oil-change interval	h	600	600	600	600	600
Vertical exhaust on bonnet		●/●	●/●/●	●/●/●	●/●/●	●/●/●
Exhaust on A-pillar		○/○	○/○/○	○/○/○	○/○/○	○/○/○
Side exhaust, bottom right (NEXOS F platform only available with this exhaust)		○/○	○/○/○	○/○/○	○/○/○	○/○/○

NEXOS		250-240-230-220-210 F	250-240-230-220-210 VL	240-230-220-210 VE
<b>Transmission</b>				
12F/12R with mechanical reverser, 30 km/h transmission		□	□	□
24F/24R with mechanical reverser and mechanical splitter, 40 km/h transmission		□	□	□
24F/24R with mechanical reverser and TWINSHIFT two-speed powershift, 40 km/h transmission		□	□	□
24F/24R with REVERSHIFT hydraulic reverser and mechanical splitter, 40 km/h transmission		□	□	–
24F/12R with REVERSHIFT hydraulic reverser and TWINSHIFT two-speed powershift, 40 km/h transmission		□	□	□
Min. speed with 12F/12R transmission at nominal engine speed	km/h	1.42	1.40	1.40
Min. speed with all transmissions except 12F/12R at nominal engine speed	km/h	0.5	0.5	0.5

PTO			Mechanically / hydraulically supported	
Clutch type depending on option				
540 rpm		●	●	●
540/1000 rpm		○	○	○
540/540 ECO rpm		○	○	○
Ground speed PTO		○	○	○

Four-wheel-drive front axle				
Electrohydraulic operation		○	○	○
Differential locks front / rear (self-locking multi-disc clutch at front / dog clutch at rear)		●	●	●
Max. steering angle	degrees	55	55	55
Optimum turning radius	m	3.60	3.60	3.70
PROACTIV front axle suspension		○	○	○

<sup>1</sup> Meets ISO TR 14396.

<sup>2</sup> Performance data fit criteria for admissibility. Performance as per 97/68/EC is identical to 2000/25/EC.

<sup>3</sup> Not available with front axle suspension and front PTO

● standard ○ optional □ available – not available

NEXOS		250-240-230-220-210 F	250-240-230-220-210 VL	240-230-220-210 VE
<b>Road safety</b>				
Braking system (multiple discs in oil bath and automatic 4WD activation)		●	●	●
Hydraulic trailer braking system		●	●	●
<b>Hydraulic system</b>				
Hydraulic pump output for steering, brakes and own requirements	l/min	27	27	27
Max. operating pressure	bar	190	190	190
2-pump hydraulic circuit		●	●	●
Hydraulic pump output for rear linkage and spool valves	l/min	60	60	60
Max. operating pressure	bar	190	190	190
3-pump hydraulic circuit		○	○	○
Hydraulic pump output for spool valves	l/min	60	60	60
Hydraulic pump output for rear linkage	l/min	27	27	27
Max. operating pressure	bar	190	190	190
Number of mechanical spool valves (min.–max.)		2-6	2-6	2-6
Four or six electronic spool valves, two of which joystick-controlled		○	○	○
Flow control on all electronic spool valves		●	●	●

Rear linkage				
Max. lifting capacity at ball ends	kg	3110	3110	2490
Continuous lifting power at ball ends	kg	1940	1940	1565
External rear linkage operation		○	○	○
Electronic rear linkage		○	○	○
Hydraulic lift rod		○	○	○
Mechanical side stabilisers		●	●	●
Hydraulic side stabilisers		○	○	–

Front linkage				
Front linkage		○	○	○
Max. lifting capacity at ball ends	kg	2800	2800	2800
Front PTO 1000 rpm		○	○	○
Front PTO 540 ECO		○	○	○

Cab				
Cab / platform		□ / □	● / –	● / –
Driver's seat, mechanical suspension		●	●	●
Driver's seat, air suspension		○	○	○
Steering column, height and angle adjustable		○	○	○
Heating		●	●	●
Air conditioning		○	○	○
Opening rear window		●	●	●
Opening front windscreen		○	○	○
Rear window wiper		○	○	○
Max. number of work lights		2 front / 2 rear	2 front / 2 rear	2 front / 2 rear
Alternative headlights		○	○	○

Weights (4WD, standard tyres, with oil and fuel, without driver)				
Rear wheels		380/85 R 28	320/85 R 28	320/85 R 28
Front wheels		9.5 R 20	280/70 R 18	280/70 R 18
Weight without ballast	kg	3110	3050	2990
Max. front ballast without front linkage	kg	250	250	250
Permissible gross weight	kg	4400	4400	4100

CLAAS continually develops its products to meet customer requirements. This means that all products are subject to change without notice. All descriptions and specifications in this brochure should be considered approximate and may include optional equipment that is not part of the standard specifications. This brochure is designed for worldwide use. Please refer to your nearest CLAAS dealer and their price list for local specification details. Some protective panels may have been removed for photographic purposes in order to present the function clearly. To avoid any risk of danger, never remove these protective panels yourself. In this respect, please refer to the relevant instructions in the operator's manual. All technical specifications relating to engines are based on the European emission regulation standards: Stage. Any reference to the Tier standards in this document is intended solely for information purposes and ease of understanding. It does not imply approval for regions in which emissions are regulated by Tier.

● standard ○ optional □ available – not available

NEXOS	250-240-230-220-210 F	250-240-230-220-210 VL	240-230-220-210 VE
-------	-----------------------	------------------------	--------------------

#### Dimensions

Rear wheels		380/70 R 28	380/85 R 28	320/85 R 28
Front wheels		280/70 R 20	7.50 R 16	7.5 R 16
Height with cab (a)	mm	2455	2480	2430
Height with platform (roll bar extended/retracted)	mm	2577/1952	–	–
Min. external width	mm	from 1450	from 1260	from 1000

#### Length

Wheelbase (4WD) (b)	mm	2124	2148	2148
Overall length (without additional front ballast) (c)	mm	3977	3977	3977

#### Tyres for 4WD version

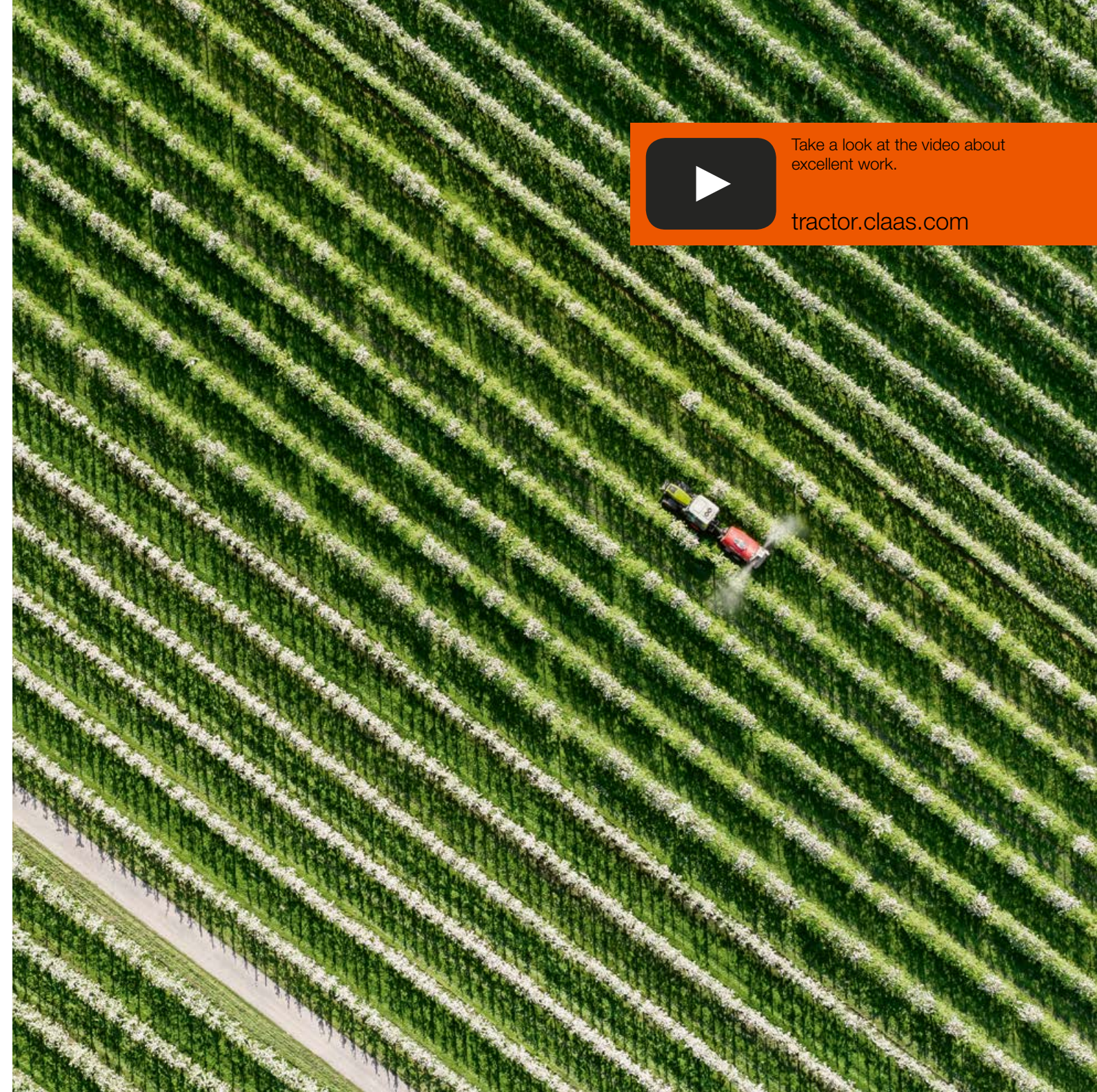
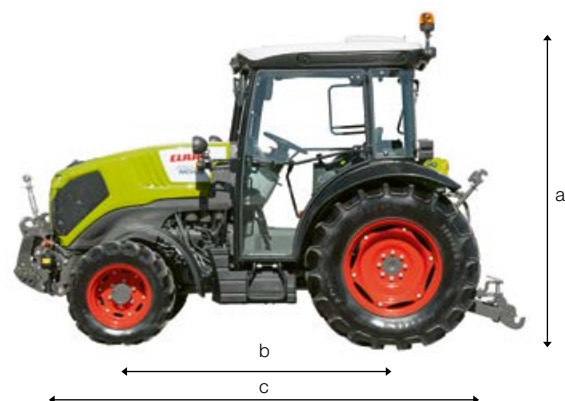
Rear tyres	Front tyres	F	VL	VE
12.4 (320/85) R 24	260/70 R 16	–	–	□
12.4 (320/85) R 24	260/70 R 16	–	–	□
13.6 (340/85) R 24	260/70 R 16	–	□	□
13.6 (340/85) R 24	10.0/75 R 15.3	–	–	□
13.6 (340/85) R 24	260/70 R 16	–	–	□
360/70 R 24	240/70 R 16	–	–	□
360/70 R 24	280/70 R 16	□	–	–
380/70 R 24	260/70 R 16	–	□	□
380/70 R 24	280/70 R 18	□	–	–
420/70 R 24	280/70 R 18	□	–	–
420/70 R 24	280/70 R 20	□	–	–
480/65 R 24	280/70 R 18	□	–	–
9.5 (250/85) R 28	6.00-16	–	–	□
9.5 (250/85) R 28	260/70 R 16	–	–	□
11.2 (280/85) R 28	260/70 R 16	–	□	□
11.2 (280/85) R 28	260/70 R 16	–	□	□
12.4 (320/85) R 28	7.50 R 16	–	□	□
12.4 (320/85) R 28	280/70 R 20	□	–	–
13.6 (340/85) R 28	7.50 R 16	–	□	□
13.6 (340/85) R 28	8.25 R 16	–	□	□
13.6 (340/85) R 28	280/70 R 18	–	□	–
14.9 (380/85) R 28	7.50 R 18	–	□	–
14.9 (380/85) R 28	280/70 R 18	–	□	□
14.9 (380/85) R 28	9.5 R 20	□	–	–
360/70 R 28	280/70 R 16	–	–	□
380/70 R 28	280/70 R 20	□	–	–
420/70 R 28	280/70 R 18	–	□	□
420/70 R 28	300/70 R 20	□	–	–
420/70 R 28	320/70 R 20	□	–	–
480/65 R 28	280/70 R 18	–	□	–
480/65 R 28	320/70 R 20	□	–	–
420/70 R 24 <sup>1</sup>	280/70 R 18 <sup>1</sup>	□	–	–
360/80 R 24 <sup>2</sup>	250/80 R 16 <sup>2</sup>	□	–	–
400/80 R 28 <sup>2</sup>	340/80 R 18 <sup>2</sup>	□	–	–

#### Tyres for 2WD version

Rear tyres	Front tyres	F	VL	VE
13.6 (340/85) R 24	6.00-16	–	□	□
360/70 R 24	6.00-16	–	–	□
9.5 (250/85) R 28	6.00-16	–	–	□
11.2 (280/85) R 28	6.00-16	–	□	□
12.4 (320/85) R 28	6.00-16	□	□	–
	6.50-16	–	–	□
13.6 (340/85) R 28	6.50-16	□	□	–
	7.50-16	□	□	–
380/70 R 28	7.50-16	□	–	–

<sup>1</sup> Turf tyres

<sup>2</sup> Industrial tyres



Take a look at the video about excellent work.

tractor.claas.com

Excellent work. Tractors from CLAAS.

CLAAS KGaA mbH  
Mühlenwinkel 1  
33428 Harsewinkel  
Deutschland  
Tel. +49 5247 12-0  
claas.com